



Working at NHS Golden Jubilee

Candidate Information

Delivering care through collaboration

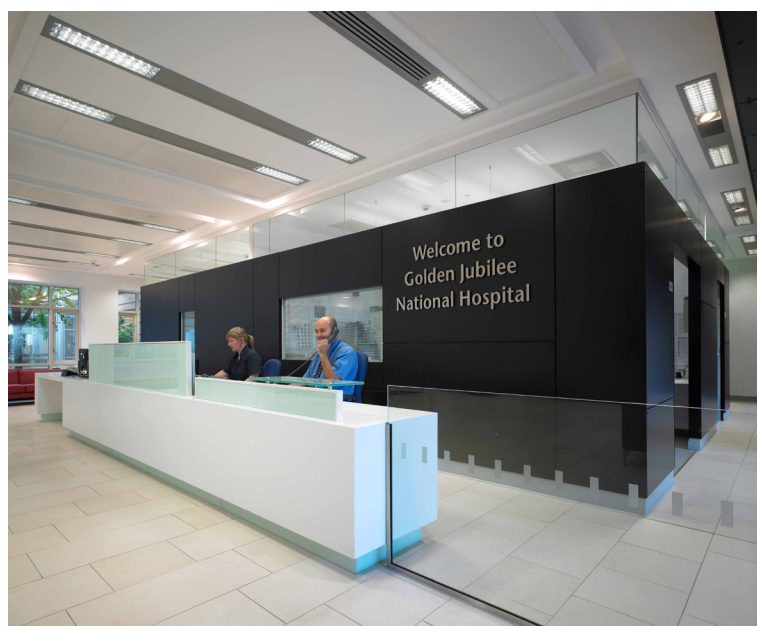
About us

The NHS Golden Jubilee is unique within NHSScotland. We are a national institution, independently run by our own NHS Board, delivering care through collaboration.

Set in a modern purpose-built environment, our facility includes the Golden Jubilee National Hospital, Research Institute and Conference Hotel. This allows us to combine a top quality hospital with hotel and conference spaces, research and clinical skills facilities, along with dedicated areas to drive forward innovation.

This integrated approach, with a focus on continuous learning and strong links to academia and industry, creates a vibrant network of innovation, learning and best practice.

Our patient-led approach to healthcare encourages an ethos that is open, questioning and participative; everyone is encouraged to speak out and be actively involved in our quest for continuous improvement.



Clinical Services

- Cardiac Surgery
- Thoracic Surgery
- Advanced Heart Failure
- Heart Transplantation
- Congenital Cardiac
- Pulmonary Vascular
- Diagnostic Cardiology
- Interventional Cardiology
- Orthopaedic Surgery
- General Surgery
- Endoscopy
- Ophthalmology
- Plastic Surgery

Diagnostic Imaging

- Interventional Imaging and Research
- Magnetic Resonance Imaging
- Computer Tomography
- General X-ray
- Bone Densitometry
- Barium exams
- Ultrasound

Clinical Support

- Sterile Processing
- Laboratory
- Physiotherapy
- Cardiac Physiology
- Occupational Therapy
- Health and Safety
- Pharmacy



Board Strategy

Our Board Strategy sets out our key priorities for the next three years.

As part of our Board Strategy, we will:

- continue to deliver high quality care through our existing regional and national services and our elective care provision;
- improve outcomes for people using our services by further developing world class innovative models of care;
- deliver the expansion of our elective care provision through new hospital facilities. This is fundamental to our future and the NHSScotland's Health and Social Care Delivery Plan;
- work with NHS Boards to ensure effective management of the national elective centres and delivery of consistent high-quality models of care across NHSScotland;
- build on existing training and education for the range of staff involved in delivering high quality healthcare including healthcare professionals;
- continue to develop ourselves as a centre of excellence where people come to develop their skills and expertise and learn from our world leading service providers;
- build on our success in establishing a highly effective and well managed Research Institute by exploring new fields of research and growing the number of partnerships we have across academia, industry and healthcare;
- continue to grow and develop our strategic partnerships to enhance our ability to fund and support Innovation; and
- develop a sustainable business model and investment strategy for the Hotel and Conference centre that balances our unique ability to provide patients and carers with accommodation with our commercial opportunities.



Golden Jubilee National Hospital

The NHS Golden Jubilee is Scotland's flagship hospital, home of regional and national heart and lung services, a centre of excellence for orthopaedics, a high volume provider for ophthalmology and a major centre for diagnostics.

As a specialist centre for heart and lung procedures, the Golden Jubilee manages:

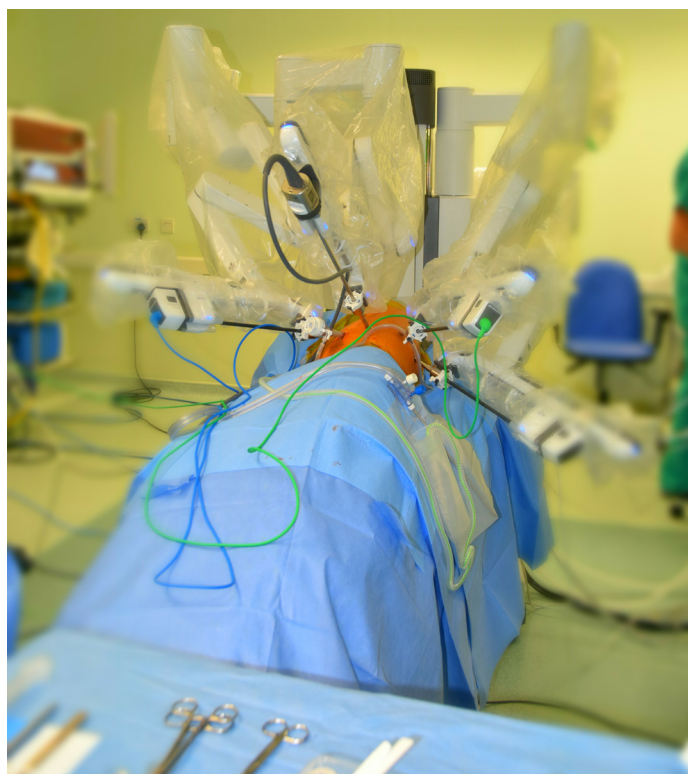
- All heart and lung surgery for the West of Scotland, including all bypasses, thoracic surgery, heart valve surgery and other complex procedures.
- Interventional cardiology services, including emergency Percutaneous Coronary Intervention (PCI), angioplasty, angiography, Transcatheter Aortic Valve Replacement (TAVI), electrophysiology and complex pacemakers.
- The Scottish National Advanced Heart Failure Service, including the heart transplant unit; the Scottish Pulmonary Vascular Unit; and Scottish Adult Congenital Cardiac Service.
- One of the only two specialist centres in the West of Scotland that provides the Optimal Reperfusion service.

One of our key objectives on behalf of NHSScotland is the reduction of waiting times in key elective specialities. As such, we are the largest orthopaedic centre in Europe, carrying out 25% of all hip and knee replacements and revisions in Scotland.

Our pioneering Orthopaedic team developed the Caledonian enhanced recovery programme, allowing patients to be mobilised on the day of surgery, and allowing for improved outcomes and faster recovery times for patients. The team lead on the programme's roll out on a "Once for Scotland" basis, improving the standard of care for patients all across the country.

Our Ophthalmology Unit has continued to expand to treat more patients than ever before. After expansion we will carry out 25% of all cataract operations in NHSScotland.

Our Diagnostic Imaging service sees thousands of patients every single year, carrying out vital scan and scope procedures for patients across a range of specialities, including Cardiology, Endoscopy and Colonoscopy and Radiology.





Expansion plans

As part of the Scottish Government's National Elective Centre's programme, we recently completed phase one of our expansion with the official opening of the new, state-of-the-art eye centre.

The new facility, built with an investment of £15.8 million, will carry out more than 18,000 cataract procedures every year and includes six purpose built twin theatres, as well as integrated outpatients and diagnostic facilities.

Work continues on Phase Two of our expansion and will be completed towards the end of 2022.

This will include development of:

- Increased Orthopaedic facilities
- A new Surgical Admissions and Recovery Unit
- A new Endoscopy Suite
- A new Central Sterile Processing Department
- A larger orthopaedic outpatient and pre-operative assessment space
- A larger theatre recovery facility.



Golden Jubilee Research Institute

The Golden Jubilee Research Institute is currently involved in approximately 110 research projects, and is hosting a number relating to our clinical specialities to ensure this pioneering approach is taken from “bench to bedside” for the patients of NHSScotland.

Our research is concentrated on interventional cardiology, electrophysiology, pulmonary vascular disease, advanced heart failure, orthopaedics and anaesthetics.

We also support an increasing number of clinical trials, enabling patients to access state of the art drugs and devices. The portfolio currently ranges from drug and device trials to studies examining different treatment options and projects that use tissue and/or data. All projects are peer reviewed and have NHS Research Ethics Committee approval. Income is generated from commercial studies, and the Chief Scientist Office provides core research funding based on the growing grant funded research portfolio.

Our Clinical Research Facility

Purpose-built to provide researchers with all the space, equipment and resources necessary to conduct high quality research in an environment designed to respect the patient’s safety, wellbeing and privacy.

The facility offers:

- a dedicated patient waiting area;
- a research support office used by research project auditors/ monitors;
- four fully equipped outpatient consulting rooms that can be organised to suit individual project requirements;
- secure storage room for project files and project specific consumables;
- sample preparation room; and
- a state-of-the-art Motion Analysis Lab.



Our Clinical Skills Centre

Specifically designed to address all your clinical and surgical training requirements, the Clinical Skills Centre includes facilities not readily available in other hospital environments, such as:

- a patient simulator;
- live audio visual links to cardiac cath labs, theatre and imaging suites; and
- an area designed for surgical skills training.

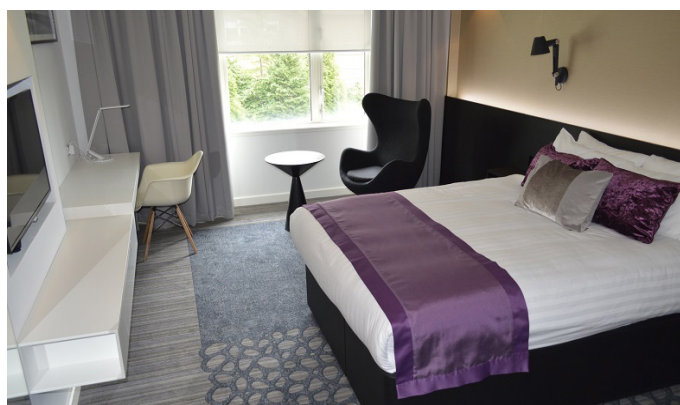
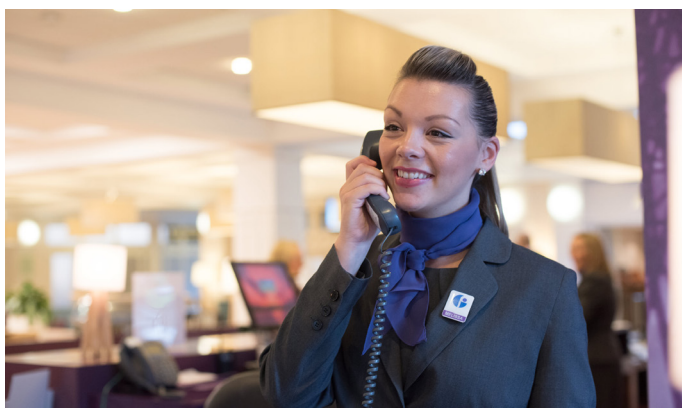
Golden Jubilee Conference Hotel

The multi award-winning Conference Hotel is a four-star facility that is managed and run by the Board and is part of the NHS Golden Jubilee campus.

The Hotel is recognised as the national NHS and public sector conference venue and is the only venue in Scotland to be accredited as a 'Venue of Excellence'. It combines the standards of a four-star hotel with the facilities and first class service required for successful conferences, training and meetings. The Conference Hotel has 168 bedrooms and 15 meeting spaces including a 174 seat auditorium and the Central Plaza, a versatile meeting, mingling and exhibition area.

The unique status of the centre not only allows them to offer preferential rates for NHS and public sector colleagues booking conferences or events, but also to cater for commercial business and keep at the heart of the local community by continuing to provide a facility for family celebrations and local events.

It supports the hospital by using its accommodation to assist with access for patients and their relatives from all over Scotland before and after admission. This includes: 8,500+ patient nights; 3,000+ patient related nights (additional nights paid for by the patient or their relatives); transplant family rooms; and sleep rooms for essential clinicians and healthcare workers.



NHSScotland Academy

The soon to launch NHS Academy is a new collaboration between NHS Golden Jubilee and NHS Education for Scotland (NES).

Aiming to deliver needs driven, accelerated, high quality training, the Academy aims to offer increased opportunities and drive recruitment across a number of key areas in the NHS to help meet the needs of caring for a changing population with diverse and complex requirements.

Specifically, the Academy aims to:

- Develop training courses linked to national recruitment and workforce needs.
- Deliver accelerated training within state of the art training facilities within a centre of excellence linked to hotel facilities as well as access to online support.
- Provide exciting and attractive training programmes and scholarships linked to recruitment and career progression.
- Design training and education based on upper quartile models of care such as the Golden Jubilee model of elective care to support national spread of best practice.

This will be a vital factor in creating a more effective, efficient and resilient workforce offering quality training, skills development and career satisfaction. The continued development and expansion of the academy model is vital to our ability in NHS Scotland to continue to grow and develop our workforce.



Our location

We are based on the banks of the River Clyde adjacent to the Erskine Bridge, in close proximity to Glasgow International Airport and within 30 minutes of the centre of Glasgow by road and rail links.

A direct overnight sleeper rail service to Euston, London is available at the local station 5 minutes from the hospital. It is effectively situated west of Glasgow City and is minutes away from the countryside of the West of Scotland and Loch Lomond.

Glasgow and the immediate surroundings have a population of around 580,000. It's officially the world's friendliest city, you know you'll be guaranteed a warm welcome in Glasgow, and there is so much to explore and enjoy in this beautiful, vibrant city.

For further information, please visit [VisitScotland.com](https://www.visitScotland.com) which contains more information about Glasgow and the rest of Scotland.







Golden Jubilee National Hospital
Agamemnon Street,
Clydebank
West Dunbartonshire
G81 4HX

0141 951 5000

www.nhsgoldenjubilee.co.uk

*Publication images taken pre COVID