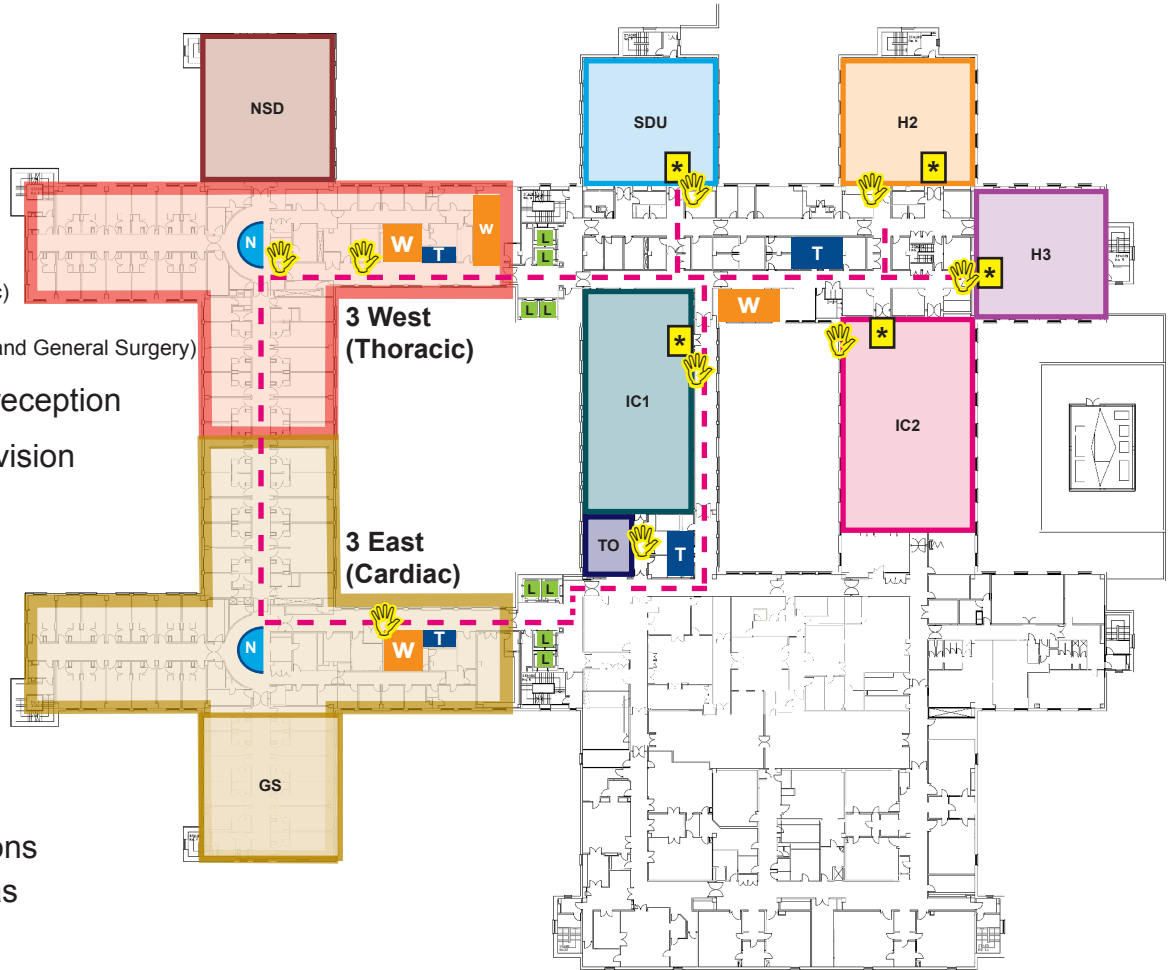


Level 3

- 3W Ward 3 West (Thoracic)
- 3E Ward 3 East (Cardiac and General Surgery)
- TO Theatre outpatient reception
- NSD National Service Division
- SDU Surgical Day Unit
- H2 HDU 2
- H3 HDU 3
- IC1 ICU 1
- IC2 ICU 2
- N Nurses station
- ✋ Hand hygiene stations
- W Patient waiting areas
- T Toilets
- L Lifts
- - - Main corridors
- * Preferred entrance



All other unmarked areas are staff only or areas you will be escorted to